

NURSE POCKET GUIDE FOR DANYELZA®

Infusion and potential adverse reactions

INDICATION

DANYELZA is indicated, in combination with granulocyte-macrophage colony-stimulating factor (GM-CSF), for the treatment of pediatric patients 1 year of age and older and adult patients with relapsed or refractory high-risk neuroblastoma in the bone or bone marrow who have demonstrated a partial response, minor response, or stable disease to prior therapy.

This indication is approved under accelerated approval based on overall response rate and duration of response. Continued approval for this indication may be contingent upon verification and description of clinical benefit in a confirmatory trial(s).

IMPORTANT SAFETY INFORMATION

WARNING: SERIOUS INFUSION-RELATED REACTIONS and NEUROTOXICITY

Serious Infusion-Related Reactions

- DANYELZA can cause serious infusion reactions, including cardiac arrest, anaphylaxis, hypotension, bronchospasm, and stridor. Infusion reactions of any Grade occurred in 94-100% of patients. Severe infusion reactions occurred in 32-68% and serious infusion reactions occurred in 4 - 18% of patients in DANYELZA clinical studies.
- Premedicate prior to each DANYELZA infusion as recommended and monitor patients for at least 2 hours following completion of each infusion. Reduce the rate, interrupt infusion, or permanently discontinue DANYELZA based on severity.

Neurotoxicity

- DANYELZA can cause severe neurotoxicity, including severe neuropathic pain, transverse myelitis and reversible posterior leukoencephalopathy syndrome (RPLS). Pain of any Grade occurred in 94-100% of patients in DANYELZA clinical studies.
- Premedicate to treat neuropathic pain as recommended. Permanently discontinue DANYELZA based on the adverse reaction and severity.

Please see additional Important Safety Information inside. Please see accompanying full Prescribing Information and Patient Information for DANYELZA including Boxed Warning on serious infusion-related reactions and neurotoxicity.

DANYELZA® is the first and only humanized GD2-binding immunotherapy approved by the FDA¹

Mechanism of Action

DANYELZA is a humanized monoclonal antibody that targets GD2 and was shown to induce complement-dependent cytotoxicity (CDC) and antibody-dependent cell-mediated cytotoxicity (ADCC) in vitro. GD2 is a disialoganglioside that is overexpressed on neuroblastoma cells and other cells of neuroectodermal origin, including the central nervous system and peripheral nerves.

Immunogenicity

Humanization may help make DANYELZA less likely to be identified as foreign by the immune system.^{2,3} However, as with all therapeutic proteins, there is the potential for immunogenicity.

- In Study 201, 2 of 24 (8%) patients tested positive for ADA after treatment with DANYELZA
- In Study 12-230, 27 of 117 (23%) tested positive for ADA after treatment with DANYELZA by an assay that was not fully validated; therefore the incidence of ADA may not be reliable

DANYELZA was studied in an outpatient setting⁴

ADA=anti-drug antibodies.

IMPORTANT SAFETY INFORMATION

CONTRAINDICATION

DANYELZA is contraindicated in patients with a history of severe hypersensitivity reaction to naxitamab-gqgk. Reactions have included anaphylaxis.

WARNINGS AND PRECAUTIONS

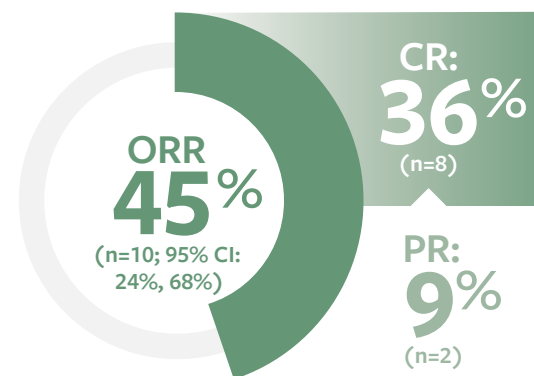
Serious Infusion-Related Reactions

DANYELZA can cause serious infusion reactions requiring urgent intervention including fluid resuscitation, administration of bronchodilators and corticosteroids, intensive care unit admission, infusion rate reduction or interruption of DANYELZA infusion. Infusion-related reactions included hypotension, bronchospasm, hypoxia, and stridor.

Please see additional Important Safety Information throughout. Please see accompanying full Prescribing Information and Patient Information for DANYELZA including Boxed Warning on serious infusion-related reactions and neurotoxicity.

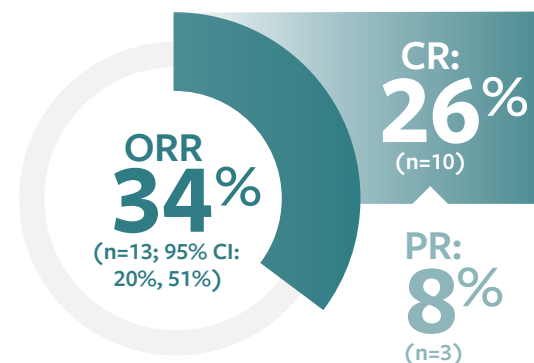
In some patients, DANYELZA® can provide a road to remission with OR and CR rates shown in clinical trials^{1,5}

Study 201 EFFICACY RESULTS (n=22)



Study 201 design: The efficacy of DANYELZA in combination with GM-CSF was evaluated in Study 201, a multicenter, open-label, single-arm trial, in a subpopulation of patients who had refractory or relapsed high-risk neuroblastoma in the bone or bone marrow and demonstrated a PR, MR, or SD to prior therapy. Patients with progressive disease were excluded.

Study 12-230 EFFICACY RESULTS (n=38)



Study 12-230 design: The efficacy of DANYELZA in combination with GM-CSF was evaluated in Study 12-230, a single-center, open-label, single-arm trial, in a subpopulation of patients who had relapsed or refractory high-risk neuroblastoma in the bone or bone marrow and demonstrated a PR, MR, or SD to prior therapy. Patients with progressive disease were excluded.

CR=complete response; MR=minor response; OR=overall response; ORR=overall response rate; PR=partial response; SD=stable disease.

Please see additional Important Safety Information throughout. Please see accompanying full Prescribing Information and Patient Information for DANYELZA including Boxed Warning on serious infusion-related reactions and neurotoxicity.

DANYELZA™
(naxitamab-gqgk)
40mg/10mL Injection

Safety considerations for DANYELZA®¹

Contraindication

DANYELZA is contraindicated in patients with a history of severe hypersensitivity reaction to naxitamab-gqgk. Reactions have included anaphylaxis.

Use in specific populations

Pregnancy: DANYELZA may cause fetal harm when administered to pregnant women. There are no available data on the use of DANYELZA in pregnant women and no animal reproduction studies have been conducted with DANYELZA.

Lactation: There are no data on the presence of naxitamab-gqgk in human milk or its effects on the breastfed child, or on milk production; however, human IgG is present in human milk. Because of the potential for serious ARs in a breastfed child from DANYELZA, advise women not to breastfeed during treatment and for 2 months after the final dose of DANYELZA.

Females and Males of Reproductive Potential: DANYELZA may cause fetal harm when administered to a pregnant woman. Verify pregnancy status in females of reproductive potential prior to initiating DANYELZA and advise to use effective contraception during treatment and for 2 months after the final dose.

Pediatric and Geriatric Use: The safety and effectiveness of DANYELZA in combination with GM-CSF have been established in pediatric patients 1 year of age or older. Clinical studies of DANYELZA in combination with GM-CSF did not include patients 65 years of age and older.

IMPORTANT SAFETY INFORMATION

Serious Infusion-Related Reactions (cont'd)

Serious infusion-related reactions occurred in 4% of patients in Study 201 and in 18% of patients in Study 12-230. Infusion-related reactions of any Grade occurred in 100% of patients in Study 201 and 94% of patients in Study 12-230. Hypotension of any grade occurred in 100% of patients in Study 201 and 89% of patients in Study 12-230.

In Study 201, 68% of patients experienced Grade 3 or 4 infusion reactions; and in Study 12-230, 32% of patients experienced Grade 3 or 4 infusion reactions. Anaphylaxis occurred in 12% of patients and two patients (8%) permanently discontinued DANYELZA due to anaphylaxis in Study 201. One patient in Study 12-230 (1.4%) experienced a Grade 4 cardiac arrest 1.5 hours following completion of DANYELZA infusion.

Please see additional Important Safety Information throughout. Please see accompanying full Prescribing Information and Patient Information for DANYELZA including Boxed Warning on serious infusion-related reactions and neurotoxicity.

DANYELZA® in combination with GM-CSF safety profile¹

Study 201 (N=25)

- Serious adverse reactions (ARs) were reported in 32% of patients; serious ARs in more than 1 patient included anaphylactic reaction (12%) and pain (8%)
- Permanent discontinuation of DANYELZA due to an AR was reported in 12% of patients; ARs resulting in permanent discontinuation of DANYELZA in 1 or more patients included anaphylactic reaction (8%) and respiratory depression (4%)
 - Dose interruptions due to an AR occurred in 84% of patients; ARs requiring dosage interruption in >10% of patients included hypotension and bronchospasm
- Infusion-related reactions and pain were reported in 100% of patients
- Clinically relevant ARs occurring in ≤10% of patients who received DANYELZA with GM-CSF included peripheral edema (8%)

Study 12-230 (N=72)

- Serious ARs were reported in 40% of patients; serious ARs in >5% of patients included hypertension (14%), hypotension (11%), and pyrexia (8%)
- Permanent discontinuation of DANYELZA due to an AR occurred in 8% of patients; 4 (6%) patients permanently discontinued DANYELZA due to hypertension and 1 (1.4%) patient discontinued due to reversible posterior leukoencephalopathy syndrome
- Infusion-related reactions and pain were reported in 94% of patients
- Clinically relevant ARs in ≤10% of patients who received DANYELZA with GM-CSF included apnea (4.2%), hypopnea (2.8%), generalized edema (2.8%), peripheral edema (8.3%), and device-related infection (4.2%)

Please see additional Important Safety Information throughout. Please see accompanying full Prescribing Information and Patient Information for DANYELZA including Boxed Warning on serious infusion-related reactions and neurotoxicity.

DANYELZA™
(naxitamab-gqgk)
40mg/10mL Injection

DANYELZA® with GM-CSF: adverse reactions observed (>10%)¹

Adverse Reaction System organ class/preferred term	STUDY 201 N=25		STUDY 12-230 ^a N=72	
	All Grades %	Grade 3 or 4 %	All Grades %	Grade 3 or 4 %
General disorders and administration site conditions				
Pain ^b	100%	72%	94%	2.8%
Infusion-related reaction ^c	100%	68%	94%	32%
Edema	28%	0%	N/A	N/A
Fatigue ^d	28%	0%	44%	0%
Pyrexia ^e	28%	0%	11%	0%
Injection site reaction	N/A	N/A	28%	0%
Localized edema	N/A	N/A	25%	0%
Respiratory, thoracic, and mediastinal disorders				
Cough	60%	0%	57%	0%
Rhinorrhea	24%	0%	15%	0%
Oropharyngeal pain	N/A	N/A	15%	0%
Vascular disorders				
Hypertension	44%	4%	28%	7%
Gastrointestinal disorders				
Vomiting	60%	4%	63%	2.8%
Diarrhea	56%	8%	50%	4.2%
Nausea	56%	0%	57%	1.4%
Constipation	N/A	N/A	15%	0%
Skin and subcutaneous tissue disorders				
Urticaria ^f	32%	4%	N/A	N/A
Erythema multiforme	N/A	N/A	33%	0%
Hyperhidrosis	N/A	N/A	17%	0%
Erythema	N/A	N/A	11%	0%
Cardiac disorders				
Tachycardia ^g	84%	4%	N/A	N/A
Sinus tachycardia	N/A	N/A	44%	1.4%
Nervous system disorders				
Peripheral neuropathy ^h	32%	0%	25%	0%
Headache	28%	8%	18%	0%

Adverse reactions were graded using CTCAE version 4.0.

CTCAE=Common Terminology Criteria for Adverse Events; N/A=not applicable.

Please see additional Important Safety Information throughout. Please see accompanying full Prescribing Information and Patient Information for DANYELZA including Boxed Warning on serious infusion-related reactions and neurotoxicity.

Adverse Reaction System organ class/preferred term	STUDY 201 N=25		STUDY 12-230 ^a N=72	
	All Grades %	Grade 3 or 4 %	All Grades %	Grade 3 or 4 %
Depressed level of consciousness	24%	16%	N/A	N/A
Lethargy	N/A	N/A	14%	0%
Eye disorders				
Neurological disorders of the eye ⁱ	24%	0%	19%	0%
Immune system disorders				
Anaphylactic reaction	12%	12%	N/A	N/A
Metabolism and nutrition disorders				
Decreased appetite	16%	0%	53%	4.2%
Infections and infestations				
Influenza	12%	0%	N/A	N/A
Rhinovirus infection	12%	0%	14%	0%
Upper respiratory tract infection	12%	0%	N/A	N/A
Enterovirus infection	N/A	N/A	13%	0%
Investigations				
Weight decreased	12%	0%	N/A	N/A
Breath sounds abnormal	N/A	N/A	15%	0%
Psychiatric disorders				
Anxiety	12%	0%	26%	0%
Irritability	N/A	N/A	25%	0%
Injury and procedural complications				
Contusion	N/A	N/A	15%	0%

^aAll adverse reactions occurring in Cycles 1 and 2, and adverse reactions of Grade ≥3 severity occurring in subsequent cycles were reported. In the dose-finding phase, Grade 2 unexpected adverse reactions were also reported for Cycles 3 and later.

^bPain includes pain, abdominal pain, pain in extremity, bone pain, neck pain, back pain, non-cardiac chest pain, flank pain, and musculoskeletal pain.

^cInfusion-related reaction includes hypotension, bronchospasm, flushing, wheezing, stridor, urticaria, dyspnea, pyrexia, infusion-related reaction, face edema, edema mouth, periorbital edema, lip swelling, swollen tongue, tongue edema, lip edema, respiratory tract edema, chills, hypoxia, pruritus, rash, rash maculopapular, and rash erythematous occurring on

the day of infusion or the day following an infusion.

^dFatigue includes fatigue and asthenia.

^ePyrexia not occurring on the day of infusion or the day following an infusion.

^fUrticaria, not occurring on the day of infusion or the day following an infusion.

^gTachycardia includes sinus tachycardia and tachycardia.

^hPeripheral neuropathy includes peripheral sensory neuropathy, peripheral motor neuropathy, paresthesia, and neuralgia.

ⁱNeurological disorders of the eye includes unequal pupils, blurred vision, accommodation disorder, visual impairment, photophobia, and mydriasis.

Please see additional Important Safety Information throughout. Please see accompanying full Prescribing Information and Patient Information for DANYELZA® including Boxed Warning on serious infusion-related reactions and neurotoxicity.

DANYELZA™
(naxitamab-gqqg)
40mg/10mL Injection

DANYELZA® with GM-CSF: selected laboratory abnormalities observed (>20%) worsening from baseline¹

Laboratory Abnormality	STUDY 201 N=25 ^a		STUDY 12-230 N=72 ^b	
	All Grades %	Grade 3 or 4 %	All Grades %	Grade 3 or 4 %
Chemistry				
Decreased potassium	63%	8%	47%	32%
Decreased albumin	50%	0%	68%	7%
Increased alanine aminotransferase	42%	8%	55%	9%
Decreased sodium	29%	0%	38%	6%
Increased glucose	N/A	N/A	74%	0%
Decreased calcium	N/A	N/A	64%	8%
Decreased magnesium	N/A	N/A	54%	0%
Increased aspartate aminotransferase	N/A	N/A	49%	4%
Decreased phosphate	N/A	N/A	47%	5%
Decreased glucose	N/A	N/A	29%	8%
Hematology				
Decreased lymphocytes	74%	30%	79%	56%
Decreased platelet count	65%	17%	71%	40%
Decreased neutrophils	61%	39%	72%	46%
Decreased hemoglobin	48%	4%	76%	42%

The table presents laboratory parameters with available grading according to Common Terminology Criteria for Adverse Events version 4.0. Baseline evaluation was the last non-missing value prior to first DANYELZA dosing. Each test incidence is based on the number of patients who had both a baseline value and at least 1 on-study laboratory measurement.

^aRange: 23 to 24 patients.

^bRange: 19 to 72 patients.

N/A=not applicable.

Please see additional Important Safety Information throughout. Please see accompanying full Prescribing Information and Patient Information for DANYELZA including Boxed Warning on serious infusion-related reactions and neurotoxicity.

DANYELZA® was studied in an outpatient setting, with a 60-minute first infusion^{1,4*††}

Important administration information

DANYELZA is administered as an intravenous (IV) infusion after dilution at 3 mg/kg/day (up to 150 mg/day) on Days 1, 3, and 5 of each treatment cycle in combination with GM-CSF.

- Treatment cycles are repeated every 4 weeks until complete response or partial response, followed by 5 additional cycles every 4 weeks. Subsequent cycles may be repeated every 8 weeks. Discontinue DANYELZA and GM-CSF for disease progression or unacceptable toxicity
- For the first infusion (Cycle 1, Day 1), administer DANYELZA intravenously over 60 minutes. For subsequent infusions, administer over 30 to 60 minutes, as tolerated
- Do not administer DANYELZA as an IV push or bolus
- Administer GM-CSF at least 1 hour prior to DANYELZA administration
- If a DANYELZA dose is missed, administer the missed dose the following week by Day 10. Administer GM-CSF 500 µg/m²/day on the first day of the DANYELZA infusion, and on the day before and on the day of the second and third infusion, respectively (i.e. a total of 5 days with 500 µg/m²/day)

Administer preinfusion medications and supportive treatment, as appropriate, during infusion.

*Does not include premedication time and postinfusion observation.

†Infusion interruption or rate reduction may be used to manage serious infusion reactions and may impact total infusion time.

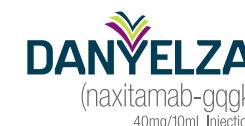
††First infusion is cycle 1, Day 1.

IMPORTANT SAFETY INFORMATION

Serious Infusion-Related Reactions (cont'd)

In Study 201, infusion reactions generally occurred within 24 hours of completing a DANYELZA infusion, most often within 30 minutes of initiation. Infusion reactions were most frequent during the first infusion of DANYELZA in each cycle. Eighty percent of patients required reduction in infusion rate and 80% of patients had an infusion interrupted for at least one infusion-related reaction.

Please see additional Important Safety Information throughout. Please see accompanying full Prescribing Information and Patient Information for DANYELZA including Boxed Warning on serious infusion-related reactions and neurotoxicity.



Starting prior to infusion day¹

Pain management

Beginning 5 days prior to the first infusion of DANYELZA[®] in each cycle, initiate a 12-day course (Day –4 through Day 7) of prophylactic medication for neuropathic pain such as gabapentin.

GM-CSF

GM-CSF is administered by subcutaneous injection beginning 5 days prior to the first infusion of DANYELZA in each cycle.

- On Days –4 to 0: administer GM-CSF 250 µg/m²/day by subcutaneous injection
- On Days 1 to 5: administer GM-CSF 500 µg/m²/day by subcutaneous injection
- Refer to the GM-CSF Prescribing Information for additional GM-CSF recommended dosing information

Day	PRESTART					START				
	-4	-3	-2	-1	0	1	2	3	4	5
Subcutaneous GM-CSF	250 µg/m ² /day					500 µg/m ² /day				
Intravenous DANYELZA						3 mg/kg/day		3 mg/kg/day		3 mg/kg/day

Preparing for Infusion

- Review information on infusion order
- Review notes from previous infusion if applicable
- Check for vital signs, including heart rate, respiratory rate, and blood pressure

IMPORTANT SAFETY INFORMATION

Serious Infusion-Related Reactions (cont'd)

Premedicate with an antihistamine, acetaminophen, an H2 antagonist and corticosteroid as recommended. Monitor patients closely for signs and symptoms of infusion reactions during and for at least 2 hours following completion of each DANYELZA infusion in a setting where cardiopulmonary resuscitation medication and equipment are available.

Reduce the rate, interrupt infusion, or permanently discontinue DANYELZA based on severity and institute appropriate medical management as needed.

Please see additional Important Safety Information throughout. Please see accompanying full Prescribing Information and Patient Information for DANYELZA including Boxed Warning on serious infusion-related reactions and neurotoxicity.

Days of DANYELZA[®] infusion¹

Premedication for infusion-related reactions and nausea/vomiting

In clinical studies, DANYELZA has been shown to cause serious infusion reactions, including cardiac arrest, anaphylaxis, hypotension, bronchospasm, and stridor.

Corticosteroids	Antihistamine, H2 antagonist, acetaminophen, and antiemetic
30–120 minutes prior to DANYELZA	30 minutes prior to DANYELZA
<ul style="list-style-type: none"> • For the first infusion: Administer IV corticosteroids (e.g. methylprednisolone 2 mg/kg with maximum dose of 80 mg or equivalent corticosteroid dose) prior to first DANYELZA infusion • Administer for subsequent infusions if a severe reaction occurred with the previous infusion or during the previous cycle 	<ul style="list-style-type: none"> • Administer an antihistamine • Administer an H2 antagonist • Administer acetaminophen • Administer an antiemetic

Pain management

In clinical studies, DANYELZA has been shown to cause pain, including severe neuropathic pain. Pain typically began during the infusion and lasted for a median of less than 1 day (range less than 1 day and up to 62 days) in Study 201.

Opioids	Ketamine
45–60 minutes prior to DANYELZA	During infusion
<ul style="list-style-type: none"> • Administer oral opioids 	
During infusion	
<ul style="list-style-type: none"> • Administer additional IV opioids as needed for breakthrough pain 	<ul style="list-style-type: none"> • Consider use of ketamine for pain not adequately controlled by opioids

- To help gauge pain effectively during infusion, consider using the Wong-Baker FACES[®] Pain Rating Scale or the FLACC Behavioral Pain Scale. Please follow your institution's guidelines

FLACC=Face, Legs, Activity, Cry, and Consolability; IV=intravenous.

Please see additional Important Safety Information throughout. Please see accompanying full Prescribing Information and Patient Information for DANYELZA including Boxed Warning on serious infusion-related reactions and neurotoxicity.

DANYELZA[™]
(naxitamab-gqqgk)
40mg/10mL Injection

Managing adverse reactions with DANYELZA® during infusion¹

Dosage modifications for adverse reactions

DANYELZA can cause serious infusion reactions requiring urgent intervention, including fluid resuscitation, administration of bronchodilators and corticosteroids, intensive care unit admission, infusion rate reduction, or interruption of DANYELZA infusion.

- Reduce the rate of infusion, interrupt infusion, or permanently discontinue DANYELZA based on severity and institute appropriate medical management as needed. Please see *Table 2: Recommended DANYELZA Dosage Modifications for Adverse Reactions* in the full Prescribing Information
- In Study 201, infusion reactions generally occurred within 24 hours of completing a DANYELZA infusion, most often within 30 minutes of initiation. Infusion reactions were most frequent during the first infusion of DANYELZA in each cycle
- Monitor patients closely for signs and symptoms of infusion-related reactions during and for at least 2 hours following completion of each DANYELZA infusion in a setting where cardiopulmonary resuscitation supportive medications and equipment are available

Supplies to keep available during infusion*

- Oxygen mask
- Blood pressure machine/monitor
- Continuous pulse oximeter machine and probe
- Emergency equipment
- Nebulizer kits
- Cardiopulmonary resuscitation medication and equipment

*Other supplies may be required. Follow your institution's guidelines.

IMPORTANT SAFETY INFORMATION

Neurotoxicity

DANYELZA can cause severe neurotoxicity, including severe neuropathic pain, transverse myelitis, and reversible posterior leukoencephalopathy syndrome.

Pain

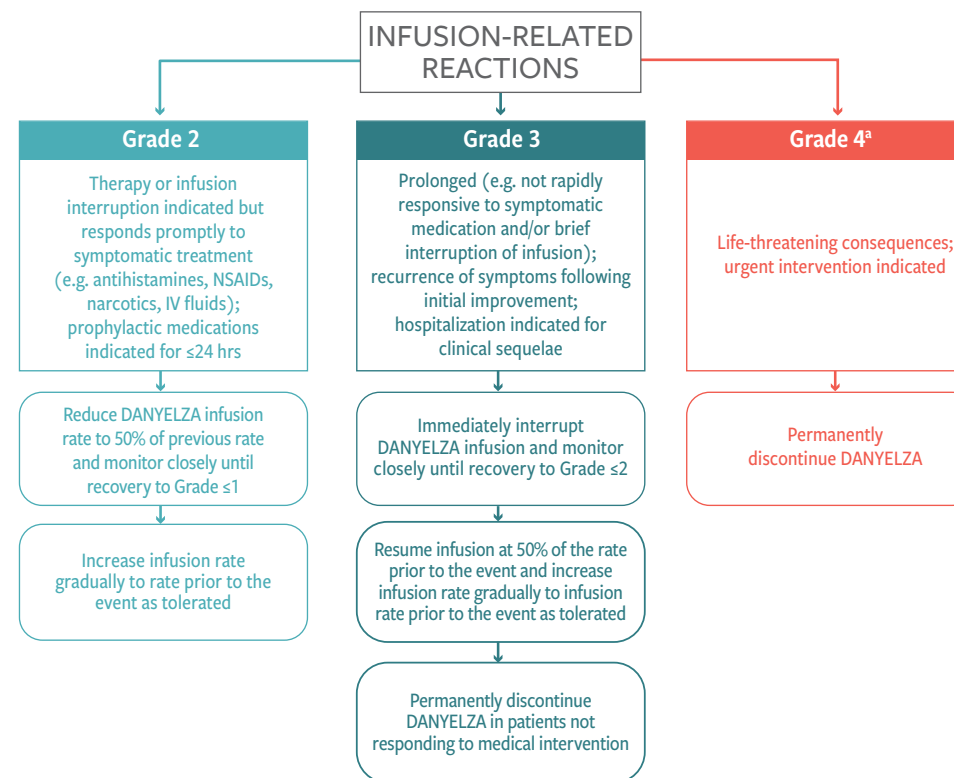
Pain, including abdominal pain, bone pain, neck pain, and extremity pain, occurred in 100% of patients in Study 201 and 94% of patients in Study 12-230. Grade 3 pain occurred in 72% of patients in Study 201. One patient in Study 201 (4%) required interruption of an infusion due to pain. Pain typically began during the infusion of DANYELZA and lasted a median of less than one day in Study 201 (range less than one day and up to 62 days).

Premedicate with drugs that treat neuropathic pain (e.g., gabapentin) and oral opioids. Administer intravenous opioids as needed for breakthrough pain. Permanently discontinue DANYELZA based on severity.

Please see additional Important Safety Information throughout. Please see accompanying full Prescribing Information and Patient Information for DANYELZA including Boxed Warning on serious infusion-related reactions and neurotoxicity.

Recommended DANYELZA® dosage modifications for infusion-related reactions¹

Serious infusion-related reactions occurred in 4% of patients in Study 201 and in 18% of patients in Study 12-230. Infusion-related reactions of any grade occurred in 100% of patients in Study 201 and 94% of patients in Study 12-230.



Based on CTCAE v5.0.

^aIncludes Grade 3 or Grade 4 anaphylaxis.

CTCAE=Common Terminology Criteria for Adverse Events; IV=intravenous; NSAID=nonsteroidal anti-inflammatory drug.

IMPORTANT SAFETY INFORMATION

Transverse Myelitis

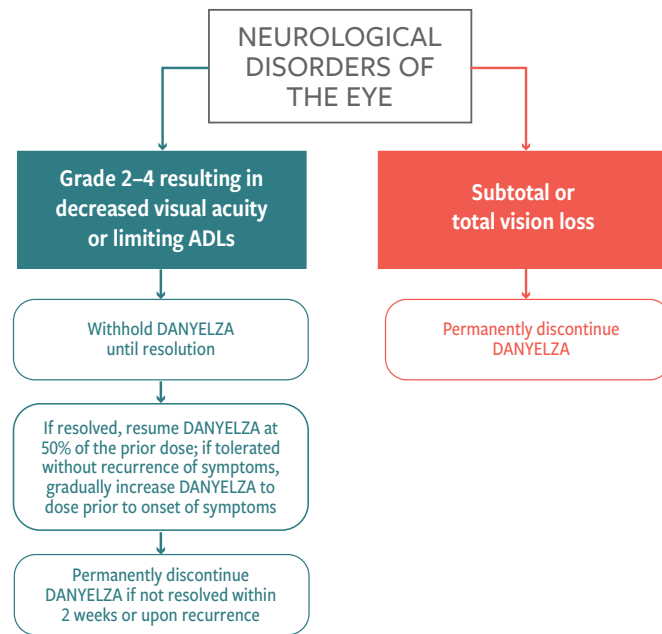
Transverse myelitis has occurred with DANYELZA. Permanently discontinue DANYELZA in patients who develop transverse myelitis.

Please see additional Important Safety Information throughout. Please see accompanying full Prescribing Information and Patient Information for DANYELZA including Boxed Warning on serious infusion-related reactions and neurotoxicity.

DANYELZA™
(naxitamab-gqqgk)
40mg/10mL Injection

Recommended DANYELZA® dosage modifications for neurotoxicity¹

Neurological disorders of the eye, including unequal pupils, blurred vision, accommodation disorder, mydriasis, visual impairment, and photophobia, occurred in 24% of patients in Study 201 and 19% of patients in Study 12-230.



Based on CTCAE v5.0.

ADLs=activities of daily living; CTCAE=Common Terminology Criteria for Adverse Events.

IMPORTANT SAFETY INFORMATION

Reversible Posterior Leukoencephalopathy Syndrome (RPLS)

Reversible posterior leukoencephalopathy syndrome (RPLS) (also known as posterior reversible encephalopathy syndrome or PRES) occurred in 2 (2.8%) patients in Study 12-230. Events occurred 2 and 7 days following completion of the first cycle of DANYELZA. Monitor blood pressure during and following DANYELZA infusion and assess for neurologic symptoms. Permanently discontinue DANYELZA in case of symptomatic RPLS.

Please see additional Important Safety Information throughout. Please see accompanying full Prescribing Information and Patient Information for DANYELZA including Boxed Warning on serious infusion-related reactions and neurotoxicity.

Permanently discontinue DANYELZA® in cases of the following adverse reactions related to neurotoxicity¹:

Pain: Grade 3 unresponsive to maximum supportive measures

- Pain, including abdominal pain, bone pain, neck pain, and extremity pain, occurred in 100% of patients in Study 201 and 94% of patients in Study 12-230. Grade 3 pain occurred in 72% of patients in Study 201. One patient in Study 201 (4%) required interruption of an infusion due to pain

Peripheral neuropathy: Grade ≥2 motor neuropathy or Grade 3 to 4 sensory neuropathy

- Peripheral neuropathy, including peripheral sensory neuropathy, peripheral motor neuropathy, paresthesia, and neuralgia, occurred in 32% of patients in Study 201 and in 25% of patients in Study 12-230. Most signs and symptoms of neuropathy began on the day of the infusion

Prolonged urinary retention: persisting following discontinuation of opioids

- Urinary retention occurred in 1 (4%) patient in Study 201 and 3 patients (4%) in Study 12-230. All events in both studies occurred on the day of an infusion of DANYELZA

RPLS: All grades

- RPLS occurred in 2 (2.8%) patients in Study 12-230. Events occurred 2 and 7 days following completion of the first cycle of DANYELZA. Monitor blood pressure during and following DANYELZA infusion and assess for neurologic symptoms

Transverse myelitis: All grades

- Transverse myelitis has occurred with DANYELZA as reported in postmarketing experience/spontaneous reports

Based on CTCAE v5.0.

CTCAE=Common Terminology Criteria for Adverse Events; RPLS=reversible posterior leukoencephalopathy syndrome.

IMPORTANT SAFETY INFORMATION

Peripheral Neuropathy

Peripheral neuropathy, including peripheral sensory neuropathy, peripheral motor neuropathy, paresthesia, and neuralgia, occurred in 32% of patients in Study 201 and in 25% of patients in Study 12-230. Most signs and symptoms of neuropathy began on the day of the infusion and neuropathy lasted a median of 5.5 days (range 0 to 22 days) in Study 201 and 0 days (range 0 to 22 days) in Study 12-230.

Permanently discontinue DANYELZA based on severity.

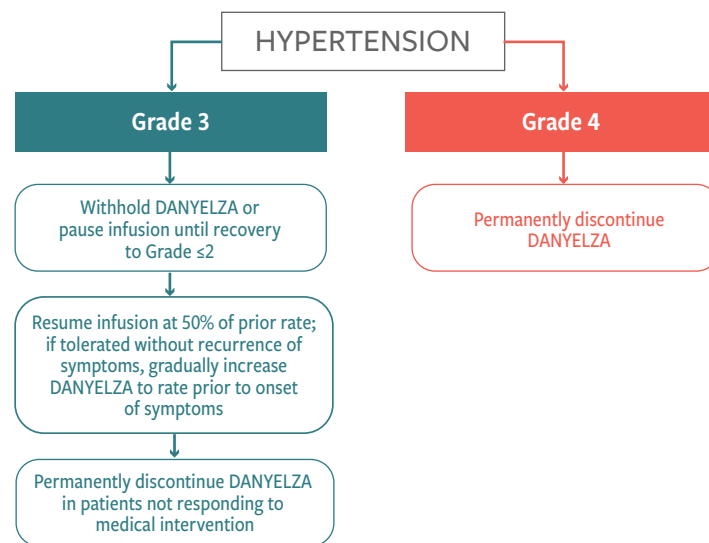
Please see additional Important Safety Information throughout. Please see accompanying full Prescribing Information and Patient Information for DANYELZA including Boxed Warning on serious infusion-related reactions and neurotoxicity.



Recommended DANYELZA® dosage modifications for hypertension¹

Hypertension occurred in 44% of patients in Study 201 and 28% of patients in Study 12-230. Do not initiate DANYELZA in patients with uncontrolled hypertension. Monitor blood pressure during infusion, and daily on Days 1 to 8 of each cycle and evaluate for complications of hypertension, including RPLS.

! Advise patients and caregivers that DANYELZA can cause hypertension and to immediately report signs or symptoms of hypertension.



Based on CTCAE v5.0.

CTCAE=Common Terminology Criteria for Adverse Events; RPLS=reversible posterior leukoencephalopathy syndrome.

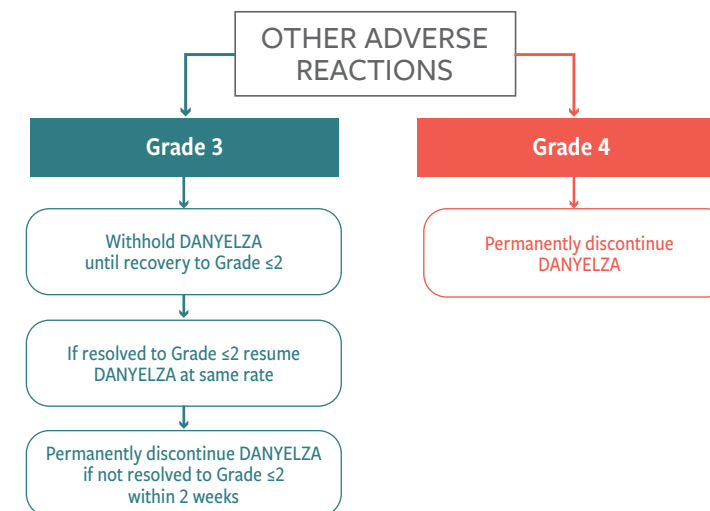
IMPORTANT SAFETY INFORMATION

Neurological Disorders of the Eye

Neurological disorders of the eye including unequal pupils, blurred vision, accommodation disorder, mydriasis, visual impairment, and photophobia occurred in 24% of patients in Study 201 and 19% of patients in Study 12-230. Neurological disorders of the eye lasted a median of 17 days (range 0 to 84 days) in Study 201 with two patients (8%) experiencing an event that had not resolved at the time of data cutoff, and a median of 1 day (range less than one day to 21 days) in Study 12-230. Permanently discontinue DANYELZA based on severity.

Please see additional Important Safety Information throughout. Please see accompanying full Prescribing Information and Patient Information for DANYELZA including Boxed Warning on serious infusion-related reactions and neurotoxicity.

Recommended DANYELZA® dosage modifications for other adverse reactions¹



Based on CTCAE v5.0.

CTCAE=Common Terminology Criteria for Adverse Events.

IMPORTANT SAFETY INFORMATION

Prolonged Urinary Retention

Urinary retention occurred in 1 (4%) patient in Study 201 and in 3 patients (4%) in Study 12-230. All events in both studies occurred on the day of an infusion of DANYELZA and lasted between 0 and 24 days. Permanently discontinue DANYELZA in patients with urinary retention that does not resolve following discontinuation of opioids.

Hypertension

Hypertension occurred in 44% of patients in Study 201 and 28% of patients in Study 12-230 who received DANYELZA. Grade 3 or 4 hypertension occurred in 4% of patients in Study 201 and 7% of patients in Study 12-230. Four patients (6%) in Study 12-230 permanently discontinued DANYELZA due to hypertension. In both studies, most events occurred on the day of DANYELZA infusion and occurred up to 9 days following an infusion of DANYELZA.

Do not initiate DANYELZA in patients with uncontrolled hypertension. Monitor blood pressure during infusion, and at least daily on Days 1 to 8 of each cycle of DANYELZA and evaluate for complications of hypertension including RPLS. Interrupt DANYELZA infusion and resume at a reduced rate, or permanently discontinue DANYELZA based on the severity.

Embryo-Fetal Toxicity

Based on its mechanism of action, DANYELZA may cause fetal harm when administered to a pregnant woman. Advise females of reproductive potential, including pregnant women, of the potential risk to a fetus. Advise females of reproductive potential to use effective contraceptive during treatment with DANYELZA and for two months after the final dose.

Please see additional Important Safety Information throughout. Please see accompanying full Prescribing Information and Patient Information for DANYELZA including Boxed Warning on serious infusion-related reactions and neurotoxicity.

DANYELZA™
(naxitamab-gqgk)
40mg/10mL Injection



Postinfusion communications: Following DANYELZA[®] infusion, continue to closely monitor the patient for at least 2 hours in a setting where cardiopulmonary resuscitation medication and equipment are available¹

- Document any pertinent information in the patient's chart (e.g. infusion rate changes, supportive measures)¹
- Provide home instructions to the patient and caregiver, including when to call the physician¹
- Set expectations for the next DANYELZA infusion and what follow-up will be necessary¹

To report suspected adverse reactions, contact Y-mAbs Therapeutics, Inc. at **1-833-339-6227** (1-833-33YMABS), or the FDA at **1-800-FDA-1088** or **www.fda.gov/medwatch**



Access clinical resources, from training modules and videos to a variety of downloadable materials, on managing DANYELZA infusion-related reactions. Register for the Y-mAbs Learning Program, an educational platform for oncology nurses, at **ymabslearning.com**

IMPORTANT SAFETY INFORMATION

ADVERSE REACTIONS

The most common adverse reactions in Studies 201 and 12-230 ($\geq 25\%$ in either study) were infusion-related reaction, pain, tachycardia, vomiting, cough, nausea, diarrhea, decreased appetite, hypertension, fatigue, erythema multiforme, peripheral neuropathy, urticaria, pyrexia, headache, injection site reaction, edema, anxiety, localized edema and irritability. The most common Grade 3 or 4 laboratory abnormalities ($\geq 5\%$ in either study) were decreased lymphocytes, decreased neutrophils, decreased hemoglobin, decreased platelet count, decreased potassium, increased alanine aminotransferase, decreased glucose, decreased calcium, decreased albumin, decreased sodium and decreased phosphate.

Please see additional Important Safety Information inside. Please see accompanying full Prescribing Information and Patient Information for DANYELZA including Boxed Warning on serious infusion-related reactions and neurotoxicity.

References: **1.** DANYELZA Prescribing Information. **2.** Cheung N-K V, Guo H, Hu J, Tassev DV, Cheung IY. Humanizing murine IgG3 anti-GD2 antibody m3F8 substantially improves antibody-dependent cell-mediated cytotoxicity while retaining targeting in vivo. *Oncoimmunology*. 2012;1(4):477-486. **3.** Harding FA, Stickler MM, Razo J, DuBridge R. The immunogenicity of humanized and fully human antibodies. *mAbs*. 2010;2(3):256-265. **4.** Data on file. Y-mAbs Therapeutics, Inc. **5.** Understanding cancer prognosis. National Cancer Institute website. Updated June 17, 2019. Accessed July 8, 2022. <https://www.cancer.gov/about-cancer/diagnosis-staging/prognosis>

HIGHLIGHTS OF PRESCRIBING INFORMATION

These highlights do not include all the information needed to use DANYELZA safely and effectively. See full prescribing information for DANYELZA.

DANYELZA® (naxitamab-ggqk) injection, for intravenous use
Initial U.S. Approval: 2020

WARNING: SERIOUS INFUSION-RELATED REACTIONS and NEUROTOXICITY
See full prescribing information for complete boxed warning

- **Serious Infusion-Related Reactions:** DANYELZA can cause serious infusion reactions, including cardiac arrest, anaphylaxis, hypotension, bronchospasm, and stridor. Premedicate prior to each DANYELZA infusion as recommended. Reduce the rate, interrupt infusion, or permanently discontinue DANYELZA based on severity (2.2, 2.3, 4, 5.1).
- **Neurotoxicity:** DANYELZA can cause severe neurotoxicity, including severe neuropathic pain, transverse myelitis, and reversible posterior leukoencephalopathy syndrome (RPLS). Premedicate to treat neuropathic pain as recommended. Permanently discontinue DANYELZA based on the adverse reaction and severity (2.2, 2.3, 5.2).

-----INDICATIONS AND USAGE-----

DANYELZA is a GD2-binding monoclonal antibody indicated, in combination with granulocyte-macrophage colony-stimulating factor (GM-CSF), for the treatment of pediatric patients 1 year of age and older and adult patients with relapsed or refractory high-risk neuroblastoma in the bone or bone marrow who have demonstrated a partial response, minor response, or stable disease to prior therapy.

This indication is approved under accelerated approval based on overall response rate and duration of response. Continued approval for this indication may be contingent upon verification and description of clinical benefit in a confirmatory trial(s). (1)

-----DOSAGE AND ADMINISTRATION-----

The recommended dosage of DANYELZA is 3 mg/kg/day (up to 150 mg/day), administered as an intravenous infusion after dilution on Days 1, 3, and 5 of each treatment cycle. Treatment cycles are repeated every 4 weeks until complete response or partial response, followed by 5 additional cycles every 4 weeks. Subsequent cycles may be repeated every 8 weeks.

Discontinue DANYELZA and GM-CSF for disease progression or unacceptable toxicity. Administer GM-CSF subcutaneously prior to and during each treatment cycle as recommended. (2.1)

-----DOSAGE FORMS AND STRENGTHS-----

Injection: 40 mg/10 mL (4 mg/mL) in a single-dose vial. (3)

-----CONTRAINDICATIONS-----

History of severe hypersensitivity reaction to naxitamab-ggqk. (4)

-----WARNINGS AND PRECAUTIONS-----

- **Neurotoxicity:** Peripheral neuropathy, neurological disorders of the eye, and prolonged urinary retention have also occurred. Permanently discontinue as recommended (2.3, 5.2)
- **Hypertension:** Monitor blood pressure during and after infusion as recommended. Withhold, reduce infusion rate, or discontinue based on severity. (5.3)
- **Embryo-Fetal Toxicity:** May cause fetal harm. Advise females of reproductive potential of potential risk to a fetus and to use effective contraception (5.4)

-----ADVERSE REACTIONS-----

- The most common adverse reactions (≥25%) are infusion-related reaction, pain, tachycardia, vomiting, cough, nausea, diarrhea, decreased appetite, hypertension, fatigue, erythema multiforme, peripheral neuropathy, urticaria, pyrexia, headache, injection site reaction, edema, anxiety, localized edema, and irritability (6.1).
- The most common Grade 3 or 4 laboratory abnormalities (≥5%) are decreased lymphocytes, decreased neutrophils, decreased hemoglobin, decreased platelet count, decreased potassium, increased alanine aminotransferase, decreased glucose, decreased calcium, decreased albumin, decreased sodium, and decreased phosphate (6.1).

To report SUSPECTED ADVERSE REACTIONS, contact Y-mAbs Therapeutics, Inc. at 1-833-339-6227 (1-833-33YMABS), or FDA at 1-800-FDA-1088 or www.fda.gov/medwatch.

-----USE IN SPECIFIC POPULATIONS-----

Lactation: Advise not to breastfeed. (8.2)

See 17 for PATIENT COUNSELING INFORMATION

Revised: 11/2020

FULL PRESCRIBING INFORMATION: CONTENTS*

1 INDICATIONS AND USAGE
2 DOSAGE AND ADMINISTRATION
2.1 Recommended Dosage
2.2 Premedications and Supportive Medications
2.3 Dosage Modifications for Adverse Reactions
2.4 Preparation
2.5 Administration
3 DOSAGE FORMS AND STRENGTHS
4 CONTRAINDICATIONS
5 WARNINGS AND PRECAUTIONS
5.1 Serious Infusion-Related Reactions
5.2 Neurotoxicity
5.3 Hypertension
5.4 Embryo-Fetal Toxicity
6 ADVERSE REACTIONS
6.1 Clinical Trials Experience
6.2 Immunogenicity
6.3 Postmarketing Experience/Spontaneous Reports

8 USE IN SPECIFIC POPULATIONS
8.1 Pregnancy
8.2 Lactation
8.3 Females and Males of Reproductive Potential
8.4 Pediatric Use
8.5 Geriatric Use
11 DESCRIPTION
12 CLINICAL PHARMACOLOGY
12.1 Mechanism of Action
12.2 Pharmacodynamics
12.3 Pharmacokinetics
13 NONCLINICAL TOXICOLOGY
13.1 Carcinogenesis, Mutagenesis, Impairment of Fertility
13.2 Animal Toxicology and/or Pharmacology
14 CLINICAL STUDIES
16 HOW SUPPLIED/STORAGE AND HANDLING
17 PATIENT COUNSELING INFORMATION
*Sections or subsections omitted from the full prescribing information are not listed

FULL PRESCRIBING INFORMATION

WARNING: SERIOUS INFUSION-RELATED REACTIONS and NEUROTOXICITY

Serious Infusion-Related Reactions

- **DANYELZA can cause serious infusion reactions, including cardiac arrest, anaphylaxis, hypotension, bronchospasm, and stridor. Infusion reactions of any Grade occurred in 94-100% of patients. Severe infusion reactions occurred in 32-68% and serious infusion reactions occurred in 4 - 18% of patients in DANYELZA clinical studies [see Warnings and Precautions (5.1)].**
- **Premedicate prior to each DANYELZA infusion as recommended and monitor patients for at least 2 hours following completion of each infusion. Reduce the rate, interrupt infusion, or permanently discontinue DANYELZA based on severity [see Dosage and Administration (2.2, 2.3), Contraindications (4), and Warnings and Precautions (5.1)].**

Neurotoxicity

- **DANYELZA can cause severe neurotoxicity, including severe neuropathic pain, transverse myelitis and reversible posterior leukoencephalopathy syndrome (RPLS). Pain of any Grade occurred in 94-100% of patients of patients in DANYELZA clinical studies [see Warnings and Precautions (5.2)].**
- **Premedicate to treat neuropathic pain as recommended. Permanently discontinue DANYELZA based on the adverse reaction and severity [see Dosage and Administration (2.2, 2.3) and Warnings and Precautions (5.2)].**

1 INDICATIONS AND USAGE

DANYELZA is indicated, in combination with granulocyte-macrophage colony-stimulating factor (GM-CSF), for the treatment of pediatric patients 1 year of age and older and adult patients with relapsed or refractory high-risk neuroblastoma in the bone or bone marrow who have demonstrated a partial response, minor response, or stable disease to prior therapy.

This indication is approved under accelerated approval based on overall response rate and duration of response [see *Clinical Studies (14)*]. Continued approval for this indication may be contingent upon verification and description of clinical benefit in a confirmatory trial(s).

2 DOSAGE AND ADMINISTRATION

2.1 Recommended Dosage

The recommended dosage of DANYELZA is 3 mg/kg/day (up to 150 mg/day) on Days 1, 3, and 5 of each treatment cycle, administered as an intravenous infusion after dilution [see *Dosage and Administration (2.4 and 2.5)*] in combination with GM-CSF subcutaneously as shown in Table 1. Refer to the GM-CSF Prescribing Information for recommended dosing information.

Treatment cycles are repeated every 4 weeks until complete response or partial response, followed by 5 additional cycles every 4 weeks. Subsequent cycles may be repeated every 8 weeks. Discontinue DANYELZA and GM-CSF for disease progression or unacceptable toxicity.

Administer pre-infusion medications and supportive treatment, as appropriate, during infusion. [see *Dosage and Administration (2.2)*]

The recommended dosage regimen for each treatment cycle is described below and in Table 1:

- Days -4 to 0: administer GM-CSF 250 $\mu\text{g}/\text{m}^2/\text{day}$ by subcutaneous injection, beginning 5 days prior to DANYELZA infusion.

- Days 1 to 5: administer GM-CSF 500 µg/m²/day by subcutaneous injection. Administer at least 1 hour prior to DANYELZA administration on Days 1, 3, and 5.
- Days, 1, 3, and 5: administer DANYELZA 3 mg/kg/day (up to 150 mg/day) by intravenous infusion.

Table 1 Dose and Schedule of GM-CSF and DANYELZA Within One Treatment Cycle

Day	-4	-3	-2	-1	0	1	2	3	4	5
Subcutaneous GM-CSF	250 µg/m ² /day					500 µg/m ² /day				
Intravenous DANYELZA						3 mg/kg/day		3 mg/kg/day		3 mg/kg/day

Missed Dose

If a DANYELZA dose is missed, administer the missed dose the following week by Day 10. Administer GM-CSF 500 µg/m²/day on the first day of the DANYELZA infusion, and on the day before and on the day of the second and third infusion, respectively (i.e. a total of 5 days with 500 µg/m²/day).

2.2 Premedications and Supportive Medications

Pain Management Prior to and During Infusion [see Warnings and Precautions (5.2)]:

- Five days prior to the first infusion of DANYELZA in each cycle, initiate a 12-day course (Day -4 through Day 7) of prophylactic medication for neuropathic pain, such as gabapentin.
- Administer oral opioids 45-60 minutes prior to initiation of each DANYELZA infusion and additional intravenous opioids as needed for breakthrough pain during the infusion.
- Consider use of ketamine for pain that is not adequately controlled by opioids.

Premedication: Reduce Risk of Infusion-Related Reactions and Nausea/Vomiting [see Warnings and Precautions (5.1) and Adverse Reactions (6.1)].

- Administer intravenous corticosteroids (e.g. methylprednisolone 2 mg/kg with maximum dose of 80 mg or equivalent corticosteroid dose) 30 minutes to 2 hours prior to the first infusion of DANYELZA. Administer corticosteroid premedication for subsequent infusions if a severe infusion reaction occurred with the previous infusion or during the previous cycle.
- Administer an antihistamine, an H2 antagonist, acetaminophen and an antiemetic 30 minutes prior to each infusion.

2.3 Dosage Modifications for Adverse Reactions

The recommended dosage modifications for DANYELZA for adverse reactions are presented in Table 2.

Table 2. Recommended DANYELZA Dosage Modifications for Adverse Reactions

Adverse Reaction	Severity ¹	Dosage Modifications
Infusion-related reactions [see Warnings and Precautions (5.1)]	Grade 2 Defined as: Therapy or infusion interruption indicated but responds promptly to symptomatic treatment (e.g., antihistamines, NSAIDs, narcotics, IV fluids); prophylactic medications indicated for ≤24 hours	<ul style="list-style-type: none"> • Reduce DANYELZA infusion rate to 50% of previous rate and monitor closely until recovery to Grade ≤ 1 • Increase infusion rate gradually to rate prior to the event as tolerated
	Grade 3 Defined as: Prolonged (e.g., not rapidly responsive to symptomatic medication and/or brief interruption of infusion); recurrence of symptoms following initial	<ul style="list-style-type: none"> • Immediately interrupt DANYELZA infusion and monitor closely until recovery to Grade ≤ 2 • Resume infusion at 50% of the rate prior to the event and increase infusion

	improvement; hospitalization indicated for clinical sequelae	<p>rate gradually to infusion rate prior to the event as tolerated.</p> <ul style="list-style-type: none"> • Permanently discontinue DANYELZA in patients not responding to medical intervention.
	<p>Grade 4 infusion-related reactions Defined as: Life-threatening consequences: urgent intervention indicated or Grade 3 or 4 anaphylaxis</p>	<ul style="list-style-type: none"> • Permanently discontinue DANYELZA
Pain [<i>see Warnings and Precautions (5.2)</i>]	Grade 3 unresponsive to maximum supportive measures	<ul style="list-style-type: none"> • Permanently discontinue DANYELZA
Reversible posterior leukoencephalopathy syndrome (RPLS) [<i>see Warnings and Precautions (5.2)</i>]	All Grades	<ul style="list-style-type: none"> • Permanently discontinue DANYELZA
Transverse myelitis [<i>see Warnings and Precautions (5.2)</i>]	All Grades	<ul style="list-style-type: none"> • Permanently discontinue DANYELZA
Peripheral neuropathy [<i>see Warnings and Precautions (5.2)</i>]	<p>Motor neuropathy: Grade 2 or greater or Sensory neuropathy: Grade 3 or 4</p>	<ul style="list-style-type: none"> • Permanently discontinue DANYELZA
Neurological disorders of the eye [<i>see Warnings and Precautions (5.2)</i>]	Grade 2 to 4 resulting in decreased visual acuity or limiting activities of daily living	<ul style="list-style-type: none"> • Withhold DANYELZA until resolution • If resolved resume DANYELZA at 50% of the prior dose; if tolerated without recurrence of symptoms, gradually increase DANYELZA to dose prior to onset of symptoms • Permanently discontinue DANYELZA if not resolved within 2 weeks or upon recurrence
	Subtotal or total vision loss	<ul style="list-style-type: none"> • Permanently discontinue DANYELZA
Prolonged urinary retention [<i>see Warnings and Precautions (5.2)</i>]	Persisting following discontinuation of opioids	<ul style="list-style-type: none"> • Permanently discontinue DANYELZA
Hypertension [<i>see Warnings and Precautions (5.3)</i>]	Grade 3	<ul style="list-style-type: none"> • Withhold DANYELZA or pause infusion until recovery to \leq Grade 2 • Resume infusion at 50% of prior rate; if tolerated without recurrence of symptoms, gradually increase DANYELZA to rate prior to onset of symptoms • Permanently discontinue DANYELZA in patients not responding to medical intervention
	Grade 4	<ul style="list-style-type: none"> • Permanently discontinue DANYELZA
	Grade 3	<ul style="list-style-type: none"> • Withhold DANYELZA until recovery to Grade ≤ 2

Other Adverse Reactions [see Adverse Reactions (6.1)]		<ul style="list-style-type: none"> • If resolved to Grade ≤ 2 resume DANYELZA at same rate • Permanently discontinue DANYELZA if not resolved to Grade ≤ 2 within 2 weeks
	Grade 4	<ul style="list-style-type: none"> • Permanently discontinue DANYELZA

¹Based on Common Terminology Criteria for Adverse Events (CTCAE) v 5.0

2.4 Preparation

- Use appropriate aseptic technique.
- Visually inspect vial for particulate matter and discoloration prior to administration. Discard vial if solution is discolored, cloudy, or contains particulate matter.
- Add appropriate quantities of 5% Albumin (Human), USP and 0.9% Sodium Chloride Injection, USP to an empty, sterile intravenous infusion bag large enough to hold the volume needed for the relevant dose as indicated in Table 3. Allow for 5-10 minutes of passive mixing.
- Withdraw the required dose of DANYELZA and inject into the infusion bag containing the 5% Albumin (Human), USP and 0.9% Sodium Chloride Injection, USP. Discard any unused portion of DANYELZA left in the vial.

Preparation instructions for DANYELZA are described in Table 3.

Table 3. Preparation of DANYELZA, 4 mg/ml

DANYELZA dose (mg)	DANYELZA volume (mL)	Volume of 5% Albumin (Human), USP (mL)	Total infusion volume achieved by adding sufficient 0.9% Sodium Chloride Injection, USP (mL)	Final concentration of prepared DANYELZA infusion (mg/mL)
≤ 80	≤ 20	10	50	≤ 1.6
81 to 120	> 20 to 30	15	75	1.1 to 1.6
121 to 160	> 30 to 40	20	100	1.2 to 1.6
161 to 200	> 40 to 50	25	125	1.3 to 1.6
201 to 240	> 50 to 60	30	150	1.3 to 1.6
241 to 280	> 60 to 70	35	175	1.4 to 1.6

If not used immediately, store the diluted DANYELZA infusion solution at room temperature (15°C to 25°C [59°F to 77°F]) for up to 8 hours or refrigerate (2°C to 8°C [36°F to 46°F]) for up to 24 hours. Once removed from refrigeration, initiate infusion within 8 hours.

2.5 Administration

- Administer DANYELZA as a diluted intravenous infusion as recommended. Do not administer DANYELZA as an intravenous push or bolus [see Dosage and Administration (2.4)].
- For the first infusion (Cycle 1, Day 1), administer DANYELZA intravenously over 60 minutes. For subsequent infusions, administer DANYELZA intravenously over 30 to 60 minutes, as tolerated. [see Dosage and Administration (2.1, 2.3)].
- Observe patients for a minimum of 2 hours following each infusion.

3 DOSAGE FORMS AND STRENGTHS

Injection: 40 mg/10 mL (4 mg/mL) clear to slightly opalescent and colorless to slightly yellow solution in a single-dose vial.

4 CONTRAINDICATIONS

DANYELZA is contraindicated in patients with a history of severe hypersensitivity reaction to naxitamab-gqgk. Reactions have included anaphylaxis [*see Warnings and Precautions (5.1)*].

5 WARNINGS AND PRECAUTIONS

5.1 Serious Infusion-Related Reactions

DANYELZA can cause serious infusion reactions requiring urgent intervention including fluid resuscitation, administration of bronchodilators and corticosteroids, intensive care unit admission, infusion rate reduction or interruption of DANYELZA infusion. Infusion-related reactions included hypotension, bronchospasm, hypoxia, and stridor [*see Adverse Reactions (6.1)*].

Serious infusion-related reactions occurred in 4% of patients in Study 201 and in 18% of patients in Study 12-230. Infusion-related reactions of any Grade occurred in 100% of patients in Study 201 and 94% of patients in Study 12-230. Hypotension of any grade occurred in 100% of patients in Study 201 and 89% of patients in Study 12-230.

In Study 201, 68% of patients experienced Grade 3 or 4 infusion reactions; and in Study 12-230, 32% of patients experienced Grade 3 or 4 infusion reactions. Anaphylaxis occurred in 12% of patients and 2 patients (8%) permanently discontinued DANYELZA due to anaphylaxis in Study 201. One patient in Study 12-230 (1.4%) experienced a Grade 4 cardiac arrest 1.5 hours following completion of DANYELZA infusion.

In Study 201, infusion reactions generally occurred within 24 hours of completing a DANYELZA infusion, most often within 30 minutes of initiation. Infusion reactions were most frequent during the first infusion of DANYELZA in each cycle. Eighty percent of patients required reduction in infusion rate and 80% of patients had an infusion interrupted for at least one infusion-related reaction.

Premedicate with an antihistamine, acetaminophen, an H2 antagonist and corticosteroid as recommended [*see Dosage and Administration (2.2)*]. Monitor patients closely for signs and symptoms of infusion reactions during and for at least 2 hours following completion of each DANYELZA infusion in a setting where cardiopulmonary resuscitation medication and equipment are available.

Reduce the rate, interrupt infusion, or permanently discontinue DANYELZA based on severity and institute appropriate medical management as needed [*see Dosage and Administration (2.3) and Contraindications (4)*].

5.2 Neurotoxicity

DANYELZA can cause severe neurotoxicity, including severe neuropathic pain, transverse myelitis, and reversible posterior leukoencephalopathy syndrome.

Pain

Pain, including abdominal pain, bone pain, neck pain, and extremity pain, occurred in 100% of patients in Study 201 and 94% of patients in Study 12-230. Grade 3 pain occurred in 72% of patients in Study 201. One patient in Study 201 (4%) required interruption of an infusion due to pain. Pain typically began during the infusion of DANYELZA and lasted a median of less than one day in Study 201 (range less than one day and up to 62 days) [*see Adverse Reactions (6.1)*].

Premedicate with drugs that treat neuropathic pain (e.g., gabapentin) and oral opioids. Administer intravenous opioids as needed for breakthrough pain [see *Dosage and Administration* (2.2)]. Permanently discontinue DANYELZA based on severity [see *Dosage and Administration* (2.3)].

Transverse Myelitis

Transverse myelitis has occurred with DANYELZA. Permanently discontinue DANYELZA in patients who develop transverse myelitis [see *Dosage and Administration* (2.3)].

Reversible Posterior Leukoencephalopathy Syndrome (RPLS)

Reversible posterior leukoencephalopathy syndrome (RPLS) (also known as posterior reversible encephalopathy syndrome or PRES) occurred in 2 (2.8%) patients in Study 12-230. Events occurred 2 and 7 days following completion of the first cycle of DANYELZA. Monitor blood pressure during and following DANYELZA infusion and assess for neurologic symptoms [see *Warnings and Precautions* (5.3)]. Permanently discontinue DANYELZA in case of symptomatic RPLS [see *Dosage and Administration* (2.3) and *Adverse Reactions* (6.1)].

Peripheral Neuropathy

Peripheral neuropathy, including peripheral sensory neuropathy, peripheral motor neuropathy, paresthesia, and neuralgia, occurred in 32% of patients in Study 201 and in 25% of patients in Study 12-230. Most signs and symptoms of neuropathy began on the day of the infusion and neuropathy lasted a median of 5.5 days (range 0 to 22 days) in Study 201 and 0 days (range 0 to 22 days) in Study 12-230 [see *Adverse Reactions* (6.1)].

Permanently discontinue DANYELZA based on severity [see *Dosage and Administration* (2.3)].

Neurological Disorders of the Eye

Neurological disorders of the eye including unequal pupils, blurred vision, accommodation disorder, mydriasis, visual impairment, and photophobia occurred in 24% of patients in Study 201 and 19% of patients in Study 12-230. Neurological disorders of the eye lasted a median of 17 days (range 0 to 84 days) in Study 201 with two patients (8%) experiencing an event that had not resolved at the time of data cutoff, and a median of 1 day (range less than one day to 21 days) in Study 12-230. Permanently discontinue DANYELZA based on severity [see *Dosage and Administration* (2.3) and *Adverse Reactions* (6.1)].

Prolonged Urinary Retention

Urinary retention occurred in 1 (4%) patient in Study 201 and in 3 patients (4%) in Study 12-230. All events in both studies occurred on the day of an infusion of DANYELZA and lasted between 0 and 24 days. Permanently discontinue DANYELZA in patients with urinary retention that does not resolve following discontinuation of opioids [see *Dosage and Administration* (2.3) and *Adverse Reactions* (6.1)].

5.3 Hypertension

Hypertension occurred in 44% of patients in Study 201 and 28% of patients in Study 12-230 who received DANYELZA. Grade 3 or 4 hypertension occurred in 4% of patients in Study 201 and 7% of patients in Study 12-230. Four patients (6%) in Study 12-230 permanently discontinued DANYELZA due to hypertension. In both studies, most events occurred on the day of DANYELZA infusion and occurred up to 9 days following an infusion of DANYELZA.

Do not initiate DANYELZA in patients with uncontrolled hypertension. Monitor blood pressure during infusion, and at least daily on Days 1 to 8 of each cycle of DANYELZA and evaluate for complications of hypertension including RPLS [see *Warnings and Precautions* (5.2)]. Interrupt DANYELZA infusion and resume at a reduced rate, or permanently discontinue DANYELZA based on the severity [see *Dosage and Administration* (2.3) and *Adverse Reactions* (6.1)].

5.4 Embryo-Fetal Toxicity

Based on its mechanism of action, DANYELZA may cause fetal harm when administered to a pregnant woman. Advise females of reproductive potential, including pregnant women, of the potential risk to a fetus. Advise females of reproductive potential to use effective contraceptive during treatment with DANYELZA and for two months after the final dose. [see *Use in Specific Populations* (8.1, 8.3)].

6 ADVERSE REACTIONS

The following clinically significant adverse reactions are also described elsewhere in the labeling:

- Serious Infusion-Related Reactions [see Warnings and Precautions (5.1)]
- Neurotoxicity [see Warnings and Precautions (5.2)]
- Hypertension [see Warnings and Precautions (5.3)]

6.1 Clinical Trials Experience

Because clinical trials are conducted under widely varying conditions, adverse reaction rates observed in the clinical trials of a drug cannot be directly compared to rates in the clinical trials of another drug and may not reflect the rates observed in practice.

The safety of DANYELZA in combination with GM-CSF was evaluated in patients with refractory or relapsed high-risk neuroblastoma in bone or bone marrow who had demonstrated a partial response, minor response, or stable disease following initial or subsequent therapy, and in patients who were in second complete remission, from two open-label, single arm studies, Study 201 (n=25) and Study 12-230 (n=72). Patients received DANYELZA 9 mg/kg/cycle administered as three separate intravenous infusions of 3 mg/kg (Day 1, 3 and 5) in the first week of each cycle. Patients also received GM-CSF 250 µg/m²/day subcutaneously on Days -4 to 0 and GM-CSF 500 µg/m²/day subcutaneously on Days 1 to 5 [see Clinical Studies (14)].

The most common adverse reactions in Studies 201 and 12-230 (≥25% in either study) were infusion-related reaction, pain, tachycardia, vomiting, cough, nausea, diarrhea, decreased appetite, hypertension, fatigue, erythema multiforme, peripheral neuropathy, urticaria, pyrexia, headache, injection site reaction, edema, anxiety, localized edema and irritability. The most common Grade 3 or 4 laboratory abnormalities (≥5% in either study) were decreased lymphocytes, decreased neutrophils, decreased hemoglobin, decreased platelet count, decreased potassium, increased alanine aminotransferase, decreased glucose, decreased calcium, decreased albumin, decreased sodium and decreased phosphate.

Study 201

In Study 201, among 25 patients who received DANYELZA in combination with GM-CSF, 12% were exposed for 6 months or longer and none were exposed for greater than one year.

Serious adverse reactions occurred in 32% of patients who received DANYELZA in combination with GM-GSF. Serious adverse reactions in more than one patient included anaphylactic reaction (12%) and pain (8%). Permanent discontinuation of DANYELZA due to an adverse reaction occurred in 12% of patients. Adverse reactions resulting in permanent discontinuation of DANYELZA included anaphylactic reaction (8%) and respiratory depression (4%).

Dosage interruptions of DANYELZA due to an adverse reaction occurred in 84% of patients. Adverse reactions requiring dosage interruption in > 10% of patients included hypotension and bronchospasm.

Table 4 summarizes adverse reactions in Study 201.

Table 4. Adverse Reactions (>10%) in Patients with Refractory or Relapsed High-Risk Neuroblastoma in Bone or Bone Marrow Who Received DANYELZA with GM-CSF in Study 201

Adverse Reaction	DANYELZA with GM-CSF ¹ (n=25)	
	All Grades (%)	Grade 3 or 4 (%)
Body system		
General disorders and administration site conditions		
Pain ²	100	72
Infusion-related reaction ³	100	68
Edema	28	0

Adverse Reaction	DANYELZA with GM-CSF ¹ (n=25)	
	All Grades (%)	Grade 3 or 4 (%)
Fatigue ⁴	28	0
Pyrexia ⁵	28	0
Respiratory, thoracic and mediastinal disorders		
Cough	60	0
Rhinorrhea	24	0
Vascular disorders		
Hypertension	44	4
Gastrointestinal disorders		
Vomiting	60	4
Diarrhea	56	8
Nausea	56	0
Skin and subcutaneous tissue disorders		
Urticaria ⁷	32	4
Cardiac disorders		
Tachycardia ⁶	84	4
Nervous system disorders		
Peripheral neuropathy ⁸	32	0
Headache	28	8
Depressed level of consciousness	24	16
Eye disorders		
Neurological disorders of the eye ⁹	24	0
Immune system disorders		
Anaphylactic reaction	12	12
Metabolism and nutrition disorders		
Decreased appetite	16	0
Infections and infestations		
Influenza	12	0
Rhinovirus infection	12	0
Upper respiratory tract infection	12	0
Investigations		
Weight decreased	12	0
Psychiatric disorders		
Anxiety	12	0

¹ Adverse reactions were graded using CTCAE version 4.0.

²Pain includes pain, abdominal pain, pain in extremity, bone pain, neck pain, back pain, and musculoskeletal pain.

³Infusion-related reaction includes hypotension, bronchospasm, flushing, wheezing, stridor, urticaria, dyspnea, pyrexia, infusion-related reaction, face edema, edema mouth, tongue edema, lip edema, respiratory tract edema, chills, hypoxia, pruritis and rash occurring on the day of infusion or the day following an infusion.

⁴Fatigue includes fatigue, asthenia.

⁵Pyrexia not occurring on the day of infusion or the day following an infusion

⁶Tachycardia includes sinus tachycardia and tachycardia

⁷Urticaria, not occurring on the day of infusion or the day following an infusion

⁸Peripheral neuropathy includes peripheral sensory neuropathy, paresthesia, neuralgia.

⁹Neurological disorders of the eye includes unequal pupils, blurred vision, and mydriasis.

Clinically relevant adverse reactions occurring in $\leq 10\%$ of patients who received DANYELZA with GM-CSF included peripheral edema (8%).

Table 5 summarizes the laboratory abnormalities in Study 201.

Table 5. Selected Laboratory Abnormalities (>20%) Worsening from Baseline in Patients with Refractory or Relapsed High-Risk Neuroblastoma in Bone or Bone Marrow Who Received DANYELZA with GM-CSF in Study 201

Laboratory Abnormality	DANYELZA with GM-CSF ¹ n=25	
	All Grades (%)	Grade 3 or 4 (%)
Chemistry		
Decreased potassium	63	8
Decreased albumin	50	0
Increased alanine aminotransferase	42	8
Decreased sodium	29	0
Hematology		
Decreased lymphocytes	74	30
Decreased platelet count	65	17
Decreased neutrophils	61	39
Decreased hemoglobin	48	4

¹The table presents laboratory parameters with available grading according to CTCAE version 4.0. Baseline evaluation was the last non-missing value prior to first DANYELZA dosing. Each test incidence is based on the number of patients who had both a baseline value and at least one on-study laboratory measurement (range: 23 to 24 patients).

Study 12-230

In Study 12-230, among 72 patients who received DANYELZA in combination with GM-CSF, 32% were exposed for 6 months or longer and 8% were exposed for greater than one year.

Serious adverse reactions occurred in 40% of patients who received DANYELZA in combination with GM-CSF. Serious adverse reactions in > 5% of patients included hypertension (14%), hypotension (11%), and pyrexia (8%). Permanent discontinuation of DANYELZA due to an adverse reaction occurred in 8% of patients. Four (6%) patients permanently discontinued DANYELZA due to hypertension and one (1.4%) patient discontinued due to RPLS.

Table 6 summarizes adverse reactions in Study 12-230.

Table 6. Adverse Reactions (>10%) in Patients with Refractory or Relapsed High-Risk Neuroblastoma in Bone or Bone Marrow Who Received DANYELZA with GM-CSF in Study 12-230

Adverse Reaction	DANYELZA with GM-CSF ^{1,2} (n=72)	
	All Grades (%)	Grade 3 or 4 (%)
Body system		
General disorders and administration site conditions		
Infusion-related reaction ³	94	32
Pain ⁴	94	2.8
Fatigue ⁵	44	0
Injection site reaction	28	0
Localized edema	25	0
Pyrexia ⁶	11	0

Vascular disorders		
Hypertension	28	7
Gastrointestinal disorders		
Vomiting	63	2.8
Nausea	57	1.4
Diarrhea	50	4.2
Constipation	15	0
Skin and subcutaneous tissue disorders		
Erythema multiforme	33	0
Hyperhidrosis	17	0
Erythema	11	0
Respiratory, thoracic and mediastinal disorders		
Cough	57	0
Oropharyngeal pain	15	0
Rhinorrhea	15	0
Nervous system disorders		
Peripheral neuropathy ⁷	25	0
Headache	18	0
Lethargy	14	0
Metabolism and nutrition disorders		
Decreased appetite	53	4.2
Cardiac disorders		
Sinus tachycardia	44	1.4
Psychiatric disorders		
Anxiety	26	0
Irritability	25	0
Investigations		
Breath sounds abnormal	15	0
Injury and procedural complications		
Contusion	15	0
Infections and infestations		
Rhinovirus infection	14	0
Enterovirus infection	13	0
Eye Disorders		
Neurological disorders of the eye ⁸	19	0

¹In Study 12-230, all adverse reactions occurring in Cycle 1 and 2, and adverse reactions of \geq Grade 3 severity occurring in subsequent cycles were reported. In the dose finding phase, Grade 2 unexpected adverse reactions were also reported for Cycles 3 and later.

²Adverse reactions were graded using CTCAE version 4.0.

³Infusion-related reaction includes hypotension, bronchospasm, flushing, wheezing, stridor, urticaria, dyspnea, pyrexia, face edema, periorbital edema, lip swelling, swollen tongue, chills, hypoxia, pruritis, rash maculopapular and rash erythematous occurring on the day of infusion or the day following an infusion.

⁴Pain includes pain, abdominal pain, pain in extremity, bone pain, neck pain, back pain, non-cardiac chest pain, flank pain, and musculoskeletal pain.

⁵Fatigue includes fatigue, asthenia.

⁶Pyrexia not occurring on the day of infusion or the day following an infusion.

⁷Peripheral neuropathy includes peripheral sensory neuropathy, peripheral motor neuropathy, paresthesia, neuralgia.

⁸Neurological disorders of the eye includes unequal pupils, blurred vision, accommodation disorder, visual impairment and photophobia.

Clinically relevant adverse reactions in $\leq 10\%$ of patients who received DANYELZA with GM-CSF included apnea (4.2%), hypopnea (2.8%), generalized edema (2.8%), peripheral edema (8.3%), and device related infection (4.2%).

Table 7 summarizes the laboratory abnormalities in Study 12-230.

Table 7. Selected Laboratory Abnormalities (>20%) Worsening from Baseline in Patients with Refractory or Relapsed High-Risk Neuroblastoma in Bone or Bone Marrow Who Received DANYELZA with GM-CSF in Study 12-230

Laboratory Abnormality	DANYELZA with GM-CSF ¹ n=72	
	All Grades (%)	Grade 3 or 4 (%)
Chemistry		
Increased glucose	74	0
Decreased albumin	68	7
Decreased calcium	64	8
Increased alanine aminotransferase	55	9
Decreased magnesium	54	0
Increased aspartate aminotransferase	49	4
Decreased phosphate	47	5
Decreased potassium	47	32
Decreased sodium	38	6
Decreased glucose	29	8
Hematology		
Decreased lymphocytes	79	56
Decreased hemoglobin	76	42
Decreased neutrophils	72	46
Decreased platelets	71	40

¹The table presents laboratory parameters with available grading according to CTCAE version 4.0. Baseline evaluation was the last non-missing value prior to first DANYELZA dosing. Each test incidence is based on the number of patients who had both a baseline value and at least one on-study laboratory measurement (range 19 to 72 patients).

6.2 Immunogenicity

As with all therapeutic proteins, there is a potential for immunogenicity. The detection of anti-drug antibody formation is highly dependent on the sensitivity and specificity of the assay. Additionally, the observed incidence of anti-drug antibody (including neutralizing antibody) positivity in an assay may be influenced by several factors, including assay methodology, sample handling, timing of sample collection, concomitant medications, and underlying disease. For these reasons, comparison of the incidence of anti-drug antibodies in the studies described below with the incidence of anti-drug antibodies in other studies or to other naxitamab products may be misleading.

In Study 201, 2 of 24 (8%) patients tested positive for anti-drug antibodies (ADA) after treatment with DANYELZA.

In Study 12-230, 27 of 117 patients (23%) tested positive for ADA after treatment with DANYELZA by an assay that was not fully validated; therefore, the incidence of ADA may not be reliable.

6.3 Postmarketing Experience/Spontaneous Reports

The following adverse reactions have been identified from expanded access reports with use of DANYELZA. Because these reactions are reported voluntarily from a population of uncertain size, it is not always possible to reliably estimate their frequency or establish a causal relationship to drug exposure.

Neurological: Transverse myelitis

8 USE IN SPECIFIC POPULATIONS

8.1 Pregnancy

Risk Summary

Based on its mechanism of action, DANYELZA may cause fetal harm when administered to pregnant women [*see Clinical Pharmacology (12.1)*]. There are no available data on the use of DANYELZA in pregnant women and no animal reproduction studies have been conducted with DANYELZA. IgG1 monoclonal antibodies are transported across the placenta in a linear fashion as pregnancy progresses, with the largest amount transferred during the third trimester. Advise pregnant women of potential risk to a fetus.

In the U.S. general population, the estimated background risk of major birth defects and miscarriage in clinically recognized pregnancies is 2% to 4% and 15% to 20%, respectively.

8.2 Lactation

Risk Summary

There are no data on the presence of naxitamab-gqgk in human milk or its effects on the breastfed child, or on milk production, however, human IgG is present in human milk. Because of the potential for serious adverse reactions in a breastfed child from DANYELZA, advise women not to breastfeed during treatment and for 2 months after the final dose of DANYELZA.

8.3 Females and Males of Reproductive Potential

DANYELZA may cause fetal harm when administered to a pregnant woman [*see Use in Specific Populations (8.1)*].

Pregnancy Testing

Verify pregnancy status in females of reproductive potential prior to initiating DANYELZA.

Contraception

Females

Advise females of reproductive potential to use effective contraception during treatment and for 2 months after the final dose of DANYELZA.

8.4 Pediatric Use

The safety and effectiveness of DANYELZA, in combination with GM-CSF for the treatment of relapsed or refractory high-risk neuroblastoma in the bone or bone marrow who have demonstrated a partial response, minor response or stable disease following prior therapy, have been established in pediatric patients 1 year of age and older.

Safety and effectiveness have not been established in pediatric patients younger than 1 year of age.

8.5 Geriatric Use

Neuroblastoma is largely a disease of pediatric and young adult patients. Clinical studies of DANYELZA in combination with GM-CSF did not include patients 65 years of age and older.

11 DESCRIPTION

Naxitamab-gqgk is a glycolipid disialoganglioside (GD2)-binding recombinant humanized monoclonal IgG1 antibody, that contains human framework regions and murine complementarity-determining regions. Naxitamab-gqgk

is produced in a Chinese hamster ovary cell line and has an approximate molecular weight of 144 kDa without glycosylation.

DANYELZA (naxitamab-gqgk) injection is a sterile, preservative-free, clear to slightly opalescent and colorless to slightly yellow solution for intravenous infusion. Each single-dose vial contains 40 mg of naxitamab-gqgk in 10 mL of solution. Each mL of solution contains 4 mg of naxitamab-gqgk, and citric acid anhydrous (0.71 mg), poloxamer 188 (1.5 mg), sodium chloride (7.01 mg), sodium citrate (6.3 mg), and Water for Injection, USP. The pH is approximately 5.7.

12 CLINICAL PHARMACOLOGY

12.1 Mechanism of Action

Naxitamab-gqgk binds to the glycolipid GD2. GD2 is a disialoganglioside that is overexpressed on neuroblastoma cells and other cells of neuroectodermal origin, including the central nervous system and peripheral nerves. In vitro, naxitamab-gqgk was able to bind to cell surface GD2 and induce complement dependent cytotoxicity (CDC) and antibody dependent cell-mediated cytotoxicity (ADCC).

12.2 Pharmacodynamics

The exposure-response relationship and time course of pharmacodynamic response for the safety and effectiveness of naxitamab-gqgk have not been fully characterized.

12.3 Pharmacokinetics

The geometric mean (CV%) maximum plasma concentration (C_{max}) of naxitamab-gqgk was 57.4 $\mu\text{g/mL}$ (49%) following DANYELZA 3 mg/kg intravenous infusion over 30 minutes.

Elimination

The mean terminal half-life of naxitamab-gqgk was 8.2 days.

Metabolism

Naxitamab-gqgk is expected to be metabolized into small peptides by catabolic pathways.

Specific Populations

Population pharmacokinetic analyses suggest that age (range: 1 to 34 years), sex and race have no clinically important effect on the clearance (CL) of naxitamab-gqgk. The naxitamab-gqgk systemic exposure (AUC) at 150 mg/day (450 mg per cycle) for patients with body weight over 50 kg is not expected to differ clinically from that of the naxitamab-gqgk exposures at 3 mg/kg/day (9 mg/kg per cycle) for patients with body weight of 30 - 50 kg.

13 NONCLINICAL TOXICOLOGY

13.1 Carcinogenesis, Mutagenesis, Impairment of Fertility

No animal studies have been conducted to evaluate the carcinogenic or mutagenic potential of naxitamab-gqgk.

Dedicated studies evaluating the effects of naxitamab-gqgk on fertility in animals have not been conducted.

13.2 Animal Toxicology and/or Pharmacology

Non-clinical studies suggest that naxitamab-gqgk-induced neuropathic pain is mediated by binding of the antibody to the GD2 antigen located on the surface of peripheral nerve fibers and myelin and subsequent induction of immune-mediated cytotoxic activity.

In a nude rat model, slight-moderate hyperplasia and erosion of the glandular mucosa of the stomach occurred, occasionally accompanied by diffuse inflammation. Complete recovery of all histopathological findings in the stomachs of male rats was observed; however, only partial recovery was observed in the stomachs of female rats during the four week off-drug period.

14 CLINICAL STUDIES

The efficacy of DANYELZA in combination with GM-CSF was evaluated in two open-label, single arm trials in patients with high-risk neuroblastoma with refractory or relapsed disease in the bone or bone marrow, Study 201 and Study 12-230.

Study 201

The efficacy of DANYELZA in combination with GM-CSF was evaluated in Study 201 (NCT03363373), a multicenter open-label, single arm trial, in a subpopulation of patients who had refractory or relapsed high-risk neuroblastoma in the bone or bone marrow and demonstrated a partial response, minor response, or stable disease to prior therapy. Patients with progressive disease were excluded. All patients received at least one systemic therapy to treat disease outside of the bone or bone marrow prior to enrollment. Patients received DANYELZA 9 mg/kg/cycle administered as three separate intravenous infusions of 3 mg/kg on Days 1, 3 and 5 of each cycle. Patients received GM-CSF subcutaneously at 250 µg/m²/day on Days -4 to 0 and at 500 µg/m²/day on Days 1 to 5. Preplanned radiation to the primary site was allowed.

The major efficacy outcome measure was overall response rate (ORR) according to the revised International Neuroblastoma Response Criteria (INRC), as determined by independent pathology and imaging review and confirmed by at least one subsequent assessment. An additional efficacy outcome measure was duration of response (DOR).

Of the 22 patients included in the efficacy analysis, 64% had refractory disease and 36% had relapsed disease; the median age was 5 years (range 3 to 10 years), 59% were male; 45% were White, 50% were Asian and 5% were Black. MYCN amplification was present in 14% of patients and 86% of patients were International Neuroblastoma Staging System (INSS) stage 4 at time of diagnosis. Disease sites included 59% in the bone only, 9% in bone marrow only, and 32% in both. Prior therapies included surgery (91%), chemotherapy (95%), radiation (36%), autologous stem cell transplant (ASCT) (18%), and anti-GD2 antibody treatment (18%).

Efficacy results for Study 201 are described in Table 8.

Table 8. Efficacy Results from Study 201

	DANYELZA with GM-CSF (n=22)
Overall response rate^a (95% CI)	45% (24%, 68%)
Complete response rate	36%
Partial response rate	9%
Duration of response	
Median (95% CI), months	6.2 (4.9, NE)
Responders with DOR ≥ 6 months	30%

CI = confidence interval

NE: not estimable.

^aOverall response rate is defined as a complete or partial response according to the revised INRC (2017) that was confirmed by at least one subsequent assessment. Responses were observed in the bone, bone marrow, or both bone and bone marrow.

In an exploratory analysis in the subset of patients previously treated with an anti-GD2 antibody (n=4), one patient demonstrated a confirmed complete response and no patients demonstrated a partial response.

Study 12-230

The efficacy of DANYELZA in combination with GM-CSF was evaluated in Study 12-230 (NCT01757626), a single center, open-label, single arm trial, in a subpopulation of patients who had relapsed or refractory high-risk neuroblastoma in bone or bone marrow and demonstrated a partial response, minor response, or stable disease to prior therapy. Patients with progressive disease were excluded. All patients received at least one systemic therapy to treat disease outside of the bone or bone marrow prior to enrollment. Patients were required to have received at least one dose of DANYELZA at a dose of 3 mg/kg or greater per infusion and have evaluable disease at baseline according to independent review per the revised INRC.

Patients received DANYELZA 9 mg/kg/cycle administered as three separate intravenous infusions of 3 mg/kg (on Days 1, 3 and 5) in the first week of each cycle. Patients received GM-CSF subcutaneously at 250 µg/m²/day on Days -4 to 0 and at 500 µg/m²/day on Days 1 to 5. Radiation to non-target bony lesions and soft tissue lesions was permitted at the investigator's discretion; assessment of response excluded sites that received radiation. The major efficacy outcome measures were overall response rate (ORR) and duration of response (DOR), as determined by independent pathology and imaging review according to the revised INRC and confirmed by at least one subsequent assessment.

Of the 38 patients included in the efficacy analysis, 55% had relapsed neuroblastoma and 45% had refractory disease; 50% were male, the median age was 5 years (range 2 to 23 years), 74% were White, 8% Asian and 5% were Black, 5% Native American/American Indian/Alaska Native, 3% other races and 5% was not available. MYCN-amplification was present in 16% of patients and most patients were International Neuroblastoma Staging System (INSS) stage 4 (95%). Fifty percent (50%) of patients had disease involvement in the bone only, 11% only in bone marrow, and 39% in both. Prior therapies included surgery (100%), chemotherapy (100%), radiation (47%), autologous stem cell transplant (ASCT) (42%), and anti-GD2 antibody treatment (58%).

Efficacy results are provided in Table 9.

Table 9. Efficacy Results from Study 12-230

	DANYELZA with GM-CSF (n=38)
Overall response rate^a (95% CI)	34% (20%, 51%)
Complete response rate	26%
Partial response rate	8%
Duration of Response	
Responders with DOR ≥ 6 months	23%

CI = confidence interval

^aOverall response rate is defined as a complete or partial response according to the revised INRC (2017) that was confirmed by at least one subsequent assessment. Responses were observed in the bone, bone marrow, or both bone and bone marrow.

In an exploratory analysis in the subset of patients previously treated with an anti-GD2 antibody (n=22), the ORR was 18% (95% CI 5%, 40%), with no patients having a documented response of 6 months or greater.

16 HOW SUPPLIED / STORAGE AND HANDLING

DANYELZA (naxitamab-gqgk) injection is a sterile, preservative-free, clear to slightly opalescent and colorless to slightly yellow solution for intravenous infusion supplied as a carton containing one 40mg/10 mL (4 mg/mL) single-dose vial.

NDC 73042-201-01

Store DANYELZA vial refrigerated at 2°C to 8°C (36°F to 46°F) in the outer carton to protect from light until time of use.

17 PATIENT COUNSELING INFORMATION

Advise the patient and caregiver to read the FDA-approved patient labeling (Patient Information).

Serious Infusion-Related Reactions

Advise patients and caregivers that DANYELZA can cause serious infusion-related reactions and anaphylaxis and to immediately report any signs or symptoms, such as facial or lip swelling, urticaria, or difficulty breathing, that occur during or following the infusion [*see Warnings and Precautions (5.1)*].

Neurotoxicity

Advise patients and caregivers that DANYELZA can cause neurotoxicity, including severe pain, peripheral neuropathy, neurological disorders of the eye, prolonged urinary retention, transverse myelitis, and reverse posterior leukoencephalopathy syndrome. Advise patients to contact their healthcare provider for any new or worsening neurological symptoms. [*see Warnings and Precautions (5.2)*].

Hypertension

Advise patients and caregivers that DANYELZA can cause hypertension and to immediately report signs or symptoms of hypertension [*see Warnings and Precautions (5.3)*].

Embryo-Fetal Toxicity [*see Warnings and Precautions (5.4) and Use in Specific Populations (8.1, 8.3)*].

Advise females of reproductive potential, including pregnant women, of the potential risk to the fetus. Advise females of reproductive potential to inform their healthcare provider of a known or suspected pregnancy and to use effective contraception during treatment with and for 2 months after the final dose of DANYELZA

Lactation

Advise women not to breastfeed during treatment with DANYELZA and for 2 months after the final dose [*see Use in Specific Populations (8.2)*].

DANYELZA is a trademark of Y-mAbs Therapeutics, Inc.

© 2020 Y-mAbs Therapeutics, Inc. – All rights reserved.

Manufactured by:

Y-mAbs Therapeutics, Inc
230 Park Avenue, Suite 3350
New York, NY 10169
U.S. License No. 2209